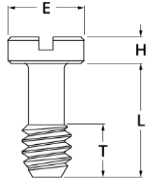
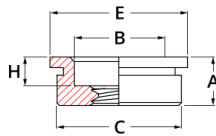


Self Clinch Panel Screw Assembly

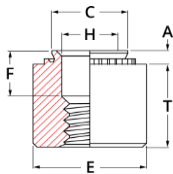


| Flush Mounted Captive Panel Screw | Thread Size | Screw Length Code | E Nom. | H 0.05 -0.15 | T Nom. | L 0.25 -0.25 |
|--|-------------|-------------------|--------|--------------------|-----------|--------------------|
| | M3 x 0.5 | 40 | 4.7 | 1.91 | 3.3 | 8.38 |
| M4 x 0.7 | 40 | 6.3 | 1.91 | 3.3 | 8.38 | |
| M5 x 0.8 | 40 | 7.1 | 1.91 | 3.3 | 8.38 | |



| Flush Mounted Captive Retainer | Thread Size | Hole Size 0.08 | Min. Panel | A Max. | B Nom. | C Max. | E Nom. | H Nom. | Min CL to edge |
|--------------------------------------|-------------|----------------------|----------------------|-----------|-----------|-----------|-----------|-----------|----------------------|
| | M3 x 0.5 | 7.14 | 1.27 (1) 3.18 (2) | 3.18 | 4.75 | 7.12 | 7.87 | 1.91 | 7.78 |
| M4 x 0.7 | 8.74 | 1.27 (1) 3.18 (2) | 3.18 | 6.48 | 8.72 | 9.53 | 1.91 | 8.64 | |
| M5 x 0.8 | 9.53 | 1.27 (1) 3.18 (2) | 3.18 | 7.37 | 9.5 | 10.41 | 1.91 | 9.14 | |

(1) Absolute Minimum Panel Thickness (2) Minimum Panel Thickness For Flush Finish



| Flush Mounted Captive Receptacle Nut | Thread Size | Hole Size 0.08 | Min. Panel | A Max. | C Max. | E Nom. | F 0.25 -0.25 | H Nom. | T 0.13 -0.13 | Min. CL to edge |
|---|-------------|-------------------|------------|-----------|-----------|-----------|--------------------|-----------|--------------------|-----------------------|
| | M3 x 0.5 | 4.75 | 1.00 | 0.97 | 4.73 | 7.11 | 3.30 | 3.2 | 6.00 | 5.59 |
| M4 x 0.7 | 6.35 | 1.00 | 0.97 | 6.33 | 8.64 | 3.30 | 4.75 | 6.00 | 7.11 | |
| M5 x 0.8 | 7.04 | 1.00 | 0.97 | 7.01 | 9.53 | 3.30 | 5.41 | 6.00 | 7.87 | |

Materials And Finish

Flush Mounted Panel Screws

300 Series Stainless Steel (A2)

Self Clinching Flush Mounted Retainer

300 Series Stainless Steel (A2)

Suitable For Installation In Ductile Panels Recommended Hardness Of 70 HRB

Self Clinching Receptacle Nut

Carbon Steel Electro Zinc Plated (Z1)

Suitable For Installation In Ductile Panels Recommended Hardness Of 80HRB

Ordering Example

Panel Screw : M3-40-A2

Flush Mounted Retainer : M3-A2

Receptacle Nut : M3-1-Z1